



This proportional valve adopts two electrical loops to control pressure and flow of hydraulic system respectively. Using very small pressure drop to track load pressure and control the pump pressure, it is an energy-saving valve.

Technical specification

Model		BYLZ-02-*-*	BYL-03-*-*	BYLZ-03-*-*	BYLZ-06-250-*	BYLZ-10-500-*
Maximum pressure (MPa)		31.5				
Maximum flow (l/min)		63	160	160	250	500
Flow range (l/min)		1-63	1-160	1-160	2.5-250	5-500
Flow control	Rated current (mA)	800				
	Coil resistance ()	19.5	10	43.5	43.5	43.5
	P differential(MPa)	0.6	0.8	0.6	0.7	0.9
	Hysteresis (%)	<5	<5	<7	<7	<7
	Repeatability (%)	<1				
Pressure control	Pressure range(MPa)	16:1.2-16	16:1.4-16	16:1.4-16	6:1.5-16	16:1.6-16
		25:1.2-25	25:1.4-25	25:1.4-25	25:1.5-25	25:1.6-25
		31.5:1.2-31.5	31.5:1.4-31.5			
	Rated current (mA)	800				
	Coil resistance ()	10	19.5	10	10	10
	Hysteresis (%)	<3				
Repeatability (%)	<1					
Weight (Kg)	7	15	16	30	60	

BYL *-*/*-*-*

Remarks

Design serial number: 70, 90

Working pressure:

16=16MPa

25=25MPa

31.5=31.5MPa

Flow range:

02 Model: 20=20 l/min

40=40l/min

63=63l/min

03 Model: 63=63 l/min

80=80l/min

125=125l/min

160=160l/min

03 Model: 250=250l/min (Only70)

10 Model: 500=500l/min (Only70)

Model: 03=03 Series

06=06 Series

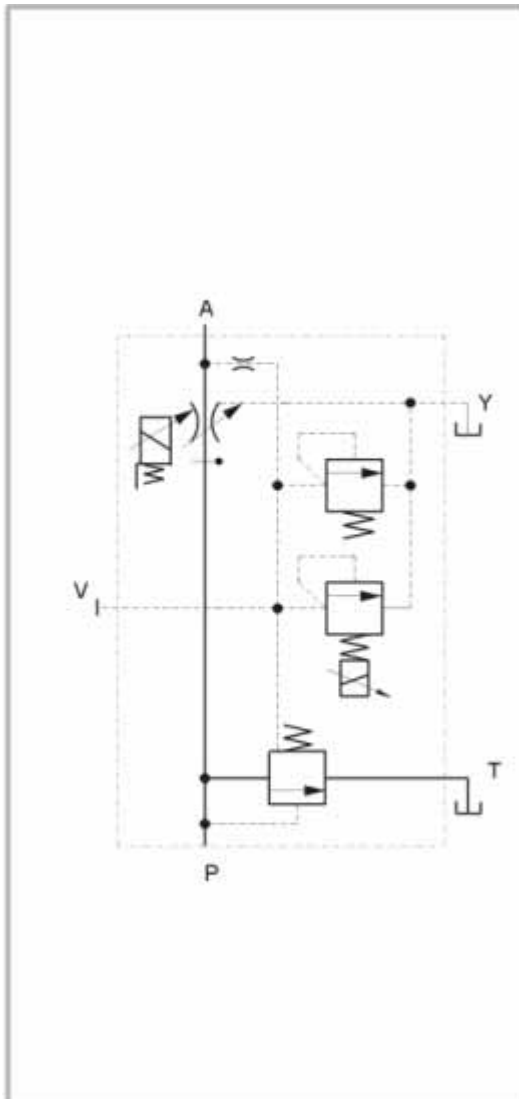
10=10 Series

Omit=pilot-operated (90 Only)

Z=directly (70 Only)

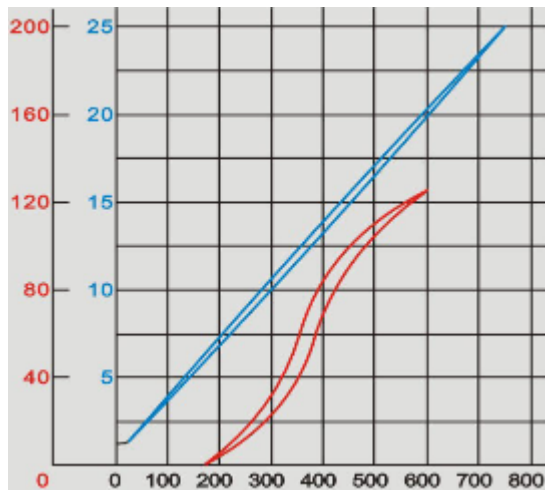
Type: Proportional electro-hydraulic control P-Q valve

Code symbol



Output flow, output pressure/input current curves

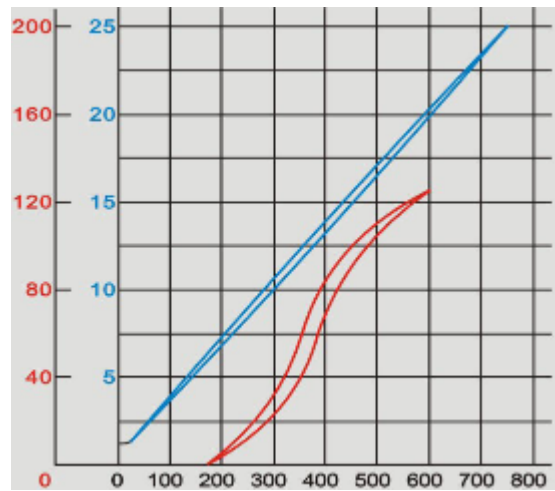
Output flow (l/min)



Input Current (mA)

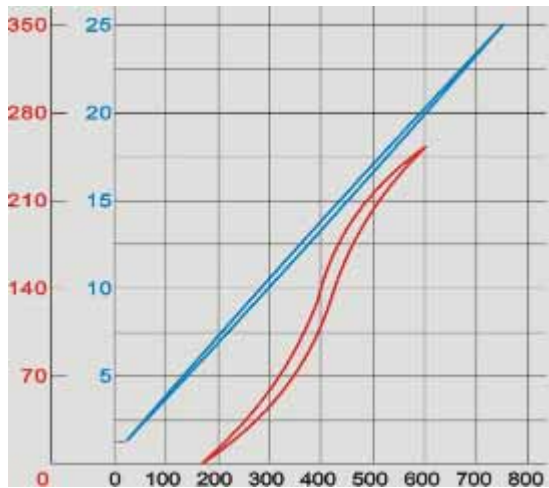
BYLZ-02-125-25

Output pressure (MPa)



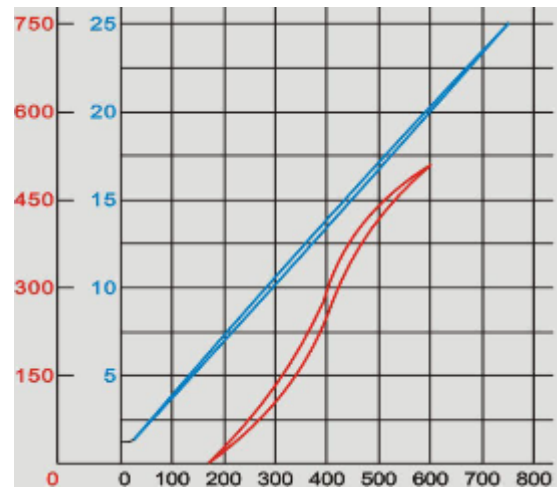
Input current (mA)

BYLZ-03-125-25



Input current (mA)

BYLZ-06-250-25

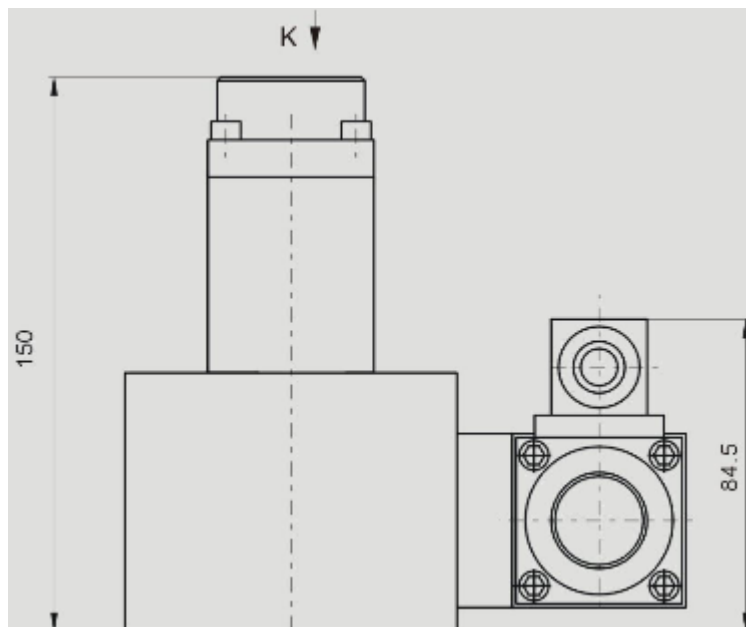


Input current (mA)

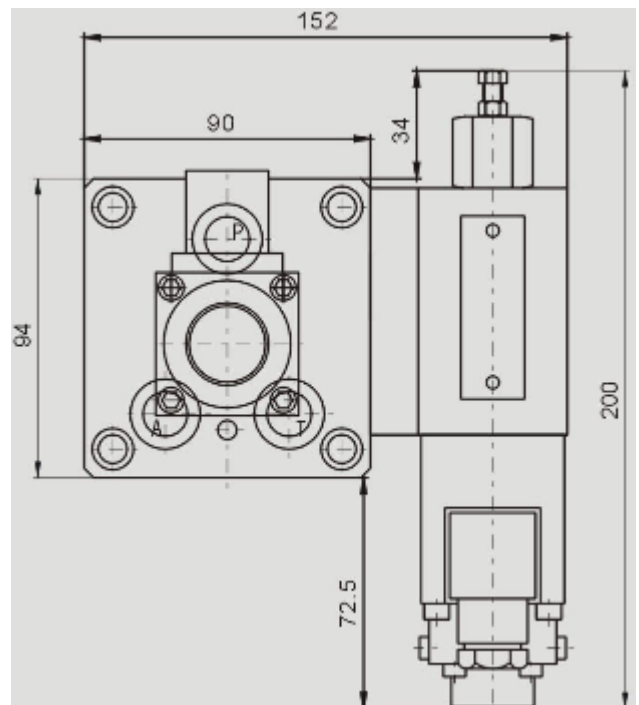
BYLZ-10-500-25

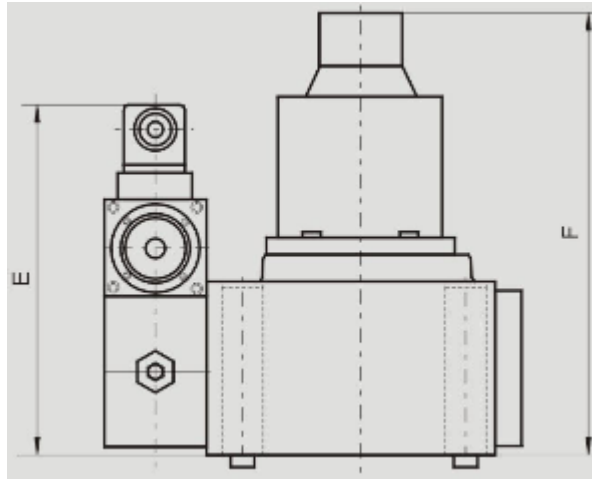
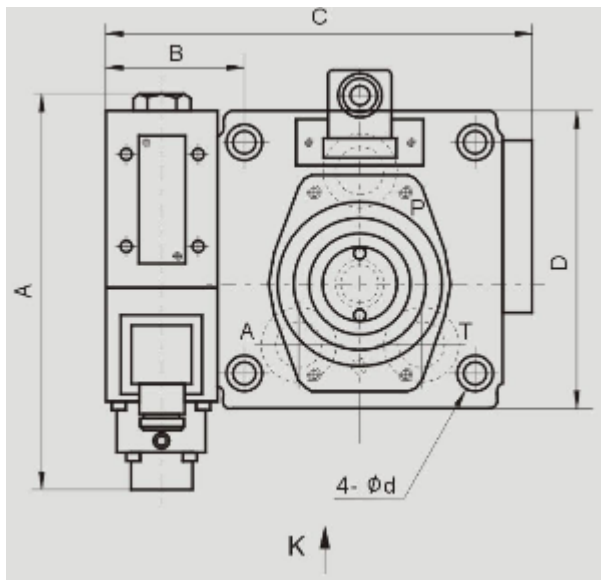
outside size

BYLZ-02



K Side





BYL -03

K Side

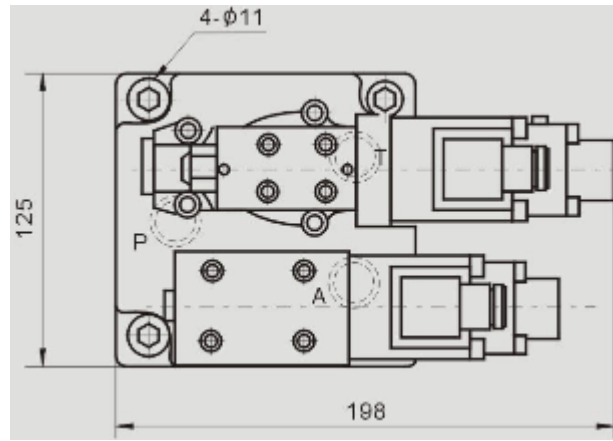
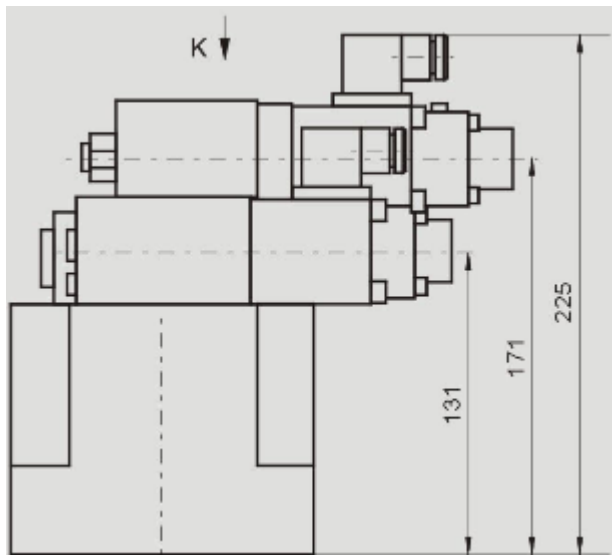
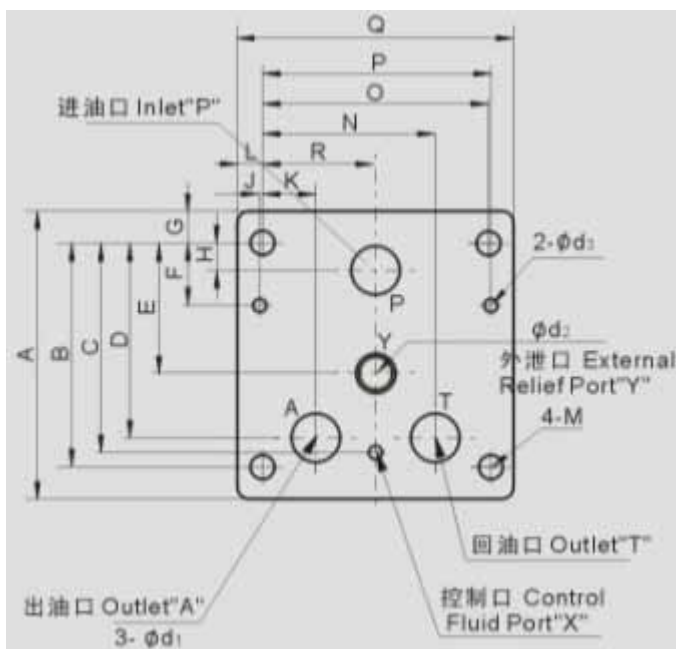


Plate size



outside size**outside size**

Model	A	B	C	D	E	F	d
BYLZ-03 BYL-03	171	61.7	188	130	171	216	11
BYLZ-06	171	67	247	174	199.5	248	17.5
BYLZ-10	171	73.5	315	224	219.5	278	21.5

Plate size

Model	A	B	C	D	E	F	G	H	J	K	L	R	N	O	P	Q	M	d ₁	d ₂	d ₃
BYLZ-02	44	76	70	65	43	45	9	10	3	16.5	9	36	55.5	72	73	90	M8	14	10	7×7L
BYLZ-03 BYL-03	130	101.6	95.3	88.9	59	28.6	14.2	12.7	0.8	23.8	11.7	50.8	77.8	101.6	102.4	125	M10	23	11	7×7L
BYLZ-06	174	133.4	133.4	107	85.7	41.3	24	12.7	1.6	28.1	17	73.1	118.1	146.1	144.5	180	M16	29	14	17.5×10L
BYLZ-10	250	177.8	177.8	144.5	119	55.5	36	17.5	1.6	35	23.5	98.5	162	196.9	198.4	244	M20	43.5	14	20×15L

Note in use

- Discharge back press 0.2MPa
Return back press 0.5MPa
- Minimum stable flow under controlled pressure :
Nominal size03 , 06 10 I/min
Nominal size10 15 I/min
- Vent hole orientation can be adjusted freely.Put it upward to vent off the air from the piping.